



**21th Annual Convention - November 14-16, 2025 - Hotel Wyndham Rio Mar  
Rio Grande, PR**

**Support and Sponsorship**



# **Come and... Exhibit With Us at Wyndham Rio Mar**

## **Why?**

- Designated opportunity to engage decision makers and showcase brand
- Obtain new leads and build new relationships
- Exhibitors are a part of our AMPRE Family and We Value Our Exhibitors

## **Traffic Booster:**

- Snack Break in the Exhibit Hall

## **Expected Attendance:**

- 100+ Pediatric Specialty Physicians
- General Practitioner's Participation
- Pediatric Resident Participation





# Easy Steps to Sponsor With Us!!!



## REVIEW

Carefully review this exhibitor and sponsorship proctus to learn about opportunities and costs.




## COMPLETE

Complete the Exhibitor/Sponsorship Agreement attached to this proctus.



## UPDATE

Be sure to visit our recently launched website - [www.amprepr.org](http://www.amprepr.org) for regular convention updates.



# Support and Sponsorship

**Diamond Level Sponsor  
(Over \$12,000.00)**

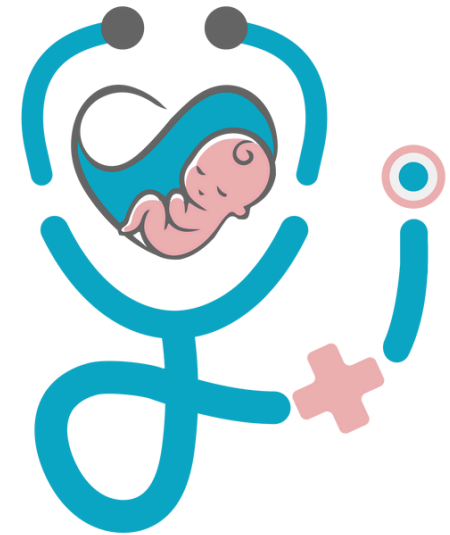
**Gold Level Sponsor - (\$9,500.00)**

**Silver Level Sponsor - (\$7,500.00)**

**Bronze Level Sponsor - (\$5,000.00)**

**Contributor  
(Above \$2,500.00)**

**Collaborator  
(Below \$2,500.00)**



**AMPRE**

**ASOCIACIÓN  
MÉDICOS PEDIATRAS  
REGIÓN ESTE**

# Support and Sponsorship



## **Diamond Level Over \$12,000.00 Includes:**

- Recognition at Opening Session in each of 3 Days of Meeting
- 1 Full Color Ad in Conference Booklet
- Corporate Exhibit Booth At Exhibit Hall (Up-to-Two Booths - 8'x 20')
- One 30 Seconds On Screen Video Promotion Between Conferences
- Conference Room Brand Exhibition in Table Tents
- 6 Tickets to Friday's Night Sponsoree Recognition Party
- Promotional Gimmies
- One-Year Ad in Newly Launch Web Page

\* For every \$1,000.00 above rate extra brand exposure available.  
(Contact AMPRE for Details)

# Support and Sponsorship



## **Gold Level \$9,500.00 - \$11,999.99 Includes:**

- Recognition at Opening Session in each of  
3 Days of Meeting
- 1/4 Full Color Ad in Conference Booklet
- Corporate Exhibit Booth At Exhibit Hall  
(One Booth - 8' x 10')
- Conference Room Brand Exhibition in  
Table Tents
- 4 Tickets to Friday's Night Sponsoree  
Recognition Party
- Promotional Gimmies
- One-Year Ad in Newly Launch
- Web Page

\* For every \$1,000.00 above rate extra brand exposure available.  
(Contact AMPRE for Details)

# Support and Sponsorship



## **Silver Level \$7,500.00 - \$9,499.99 Includes:**

- Recognition at Opening Session in each of  
3 days of Meeting
- Recognition in Color Conference Booklet
- Corporate Exhibit Booth At Exhibit Hall  
(One Booth - 8' x 10')
- Conference Room Brand Exhibition in  
Table Tents
- 4 Tickets to Friday's Night Sponsoree  
Recognition Party
- Promotional Gimmies
- One-Year Ad in Newly Launch Web Page

\* For every \$1,000.00 above rate extra brand exposure available.  
(Contact AMPRE for Details)

# Support and Sponsorship



## **Bronze Level \$5,000.00 - \$7,499.99 Includes:**

- Recognition at Opening Session on First Day of Meeting
- Recognition in Color Conference Booklet
- Corporate Exhibit Booth At Exhibit Hall  
(One Booth - 8' x 10')
- Conference Room Brand Exhibition in Table Tents
- 3 Tickets to Friday's Night Sponsoree Recognition Party
- Promotional Gimmies
- One-Year Ad in Newly Launch Web Page

\* For every \$1,000.00 above rate extra brand exposure available.  
(Contact AMPRE for Details)



# Support and Sponsorship



## **Contributor \$2,500.00 - \$4,999.99 Includes:**

- Recognition at Opening Session on  
First day of Meeting
- Corporate Exhibit Tabletop at Exhibit  
Hall (6"x 30")
- Conference Room Brand Exhibition in  
Table Tents
- Gimmies with Brand
- 2 Tickets to Friday's Night Sponsoree  
Recognition Party
- One-Year Ad in Newly Launch Web  
Page

\* For every \$1,000.00 above rate extra brand exposure available.  
(Contact AMPRE for Details)

# Support and Sponsorship



## **Collaborator Below \$2,500.00 Includes:**

- Recognition at Opening Session on  
First day of Meeting
- Recognition in Color Conference  
Booklet
- Conference Room Brand Exhibition in  
Table Tents
- Gimmies with Brand
- One-Year Ad in Newly Launch Web  
Page

# Support and Sponsorship



## **Table Top (\$1000.00):**

- Design for Commercial Every Day Use Merchandise Sell
- Space for Brand Drop-Off
- Exposition to over 200 Participants Including Attendees and Family



## **Special Event Support:**

- Promotional Lunch Conferences (price may vary)
- Pediatric's Resident/Attending Meet and Greet



## **Web Page Sponsorship:**

- One Year Web Page Sponsorship
- Click-On Brand Logo for Official Web Page Redirection
- Exposure in State of the Art Pediatric's Web Page
- Exposure on the Only Pediatric Web Page with Diverse Traffic Including Patients, Patient's Family, Pediatricians, General Practitioners, Pediatrics Sub-Specialist
- Exposure on The Only Web Page With the Most Complete General Pediatrician and Pediatrics Sub-Specialist Guide in Puerto Rico



## **Exhibit Hall Support:**

- Coffee Break in Hall (\$2,000.00 Each)



## **Event Promotion Support:**

- Conference Bags
- Lanyards / Name Badges



## **Video Marketing Sponsorship:**

- 30 Seconds Video On-Screen Video Promotion Between Conferences (x3 Per Day) (\$500.00 /Day)

# Exhibit/Sponsor Agreement

*We understand that in the interest of the success of this exhibition and of each individual and visitor, the exhibition as a whole and all displays will be categorized, and assignments made in consecutive order of Agreements received. Whenever possible, each exhibitor's requirements and requests for booth space will be made in accordance with the preferences indicated by each exhibitor, but AMPRE does not guarantee any particular space.*

(List name exactly as it should appear in the program and in any promotional material. Please type or print only.)

Company Name: \_\_\_\_\_

Contact Name: \_\_\_\_\_ Title: \_\_\_\_\_

Mailing Address: \_\_\_\_\_

City / State / Zip: \_\_\_\_\_

Telephone: \_\_\_\_\_ Fax: \_\_\_\_\_

Email Address: \_\_\_\_\_

Description of Service or Product: \_\_\_\_\_

Please Name Any Probable Exhibitor to Whom You Don't Want to be Near: \_\_\_\_\_

**Please indicate your choice of Exhibit and/or Sponsorship:**

PAYMENT ENCLOSED: ☐ Check ☐ Money Order (Please make it payable to: AMPRE)

TOTAL: \$ \_\_\_\_\_

CREDIT CARD: ☐ Amex ☐ Discover ☐ Visa ☐ Mastercard

Card Number: \_\_\_\_\_